

ArchiCAD 13 ships this month!

Bite are delighted to inform you that the next major release of ArchiCAD - version 13 is here. Scheduled for delivery in late September, exclusively for our UAS customers as part of their subscription. This inclusive upgrade contains one of the largest innovations of the last decade - a new BIM collaboration.

After several years in development **teamwork 2.0** will provide an industry-first model sharing and collaboration platform for utilisation through both local and wide area networks. This major technological innovation will provide us with a **unique competitive advantage** for reinforcing our technology leadership in the building information modelling industry.

At the same time ArchiCAD 13 is not just about Teamwork 2.0. ArchiCAD 13 also brings an impressive list of productivity improvements making this release one of the best 'balanced' versions. Graphisoft believe that with ArchiCAD 13 they will be delivering great values that both new and existing customers will highly appreciate. We are making the next huge step on our way to improve the "BIM performance". The three main themes of ArchiCAD13 are:

- Next Generation Teamwork
- Improved Workflow Solutions
- 64-bit Computing on Windows



For any users of EcoDesigner, MEP and VBE there will be a compatibility upgrade, so you will be able to continue your use of these products with ArchiCAD 13.

Bite Libraries

The new Bite Wall Framing Tool has been added to our website this month. All objects are free to our UAS clients so [log on](#), download and enjoy. If you have any requests for objects please let us know at design@bite.co.uk

This month's Tech tips:

Creating a Collage of Exploded Views in ArchiCAD

Exploded views provide a quick way of identifying a building's constituent elements and understanding how they relate to each other.

Creating exploded views in ArchiCAD

1. Coordinate Element Groups onto Layers. "Columns" for all columns, "Beams" for all beams and so on.

2. Select Shading from the View menu > 3D View mode.

3. Select Internal 3D Engine from the View menu > 3D View Mode.

The Internal 3D engine is preferred as it retains the vector quality when displaying the objects in the layout view.

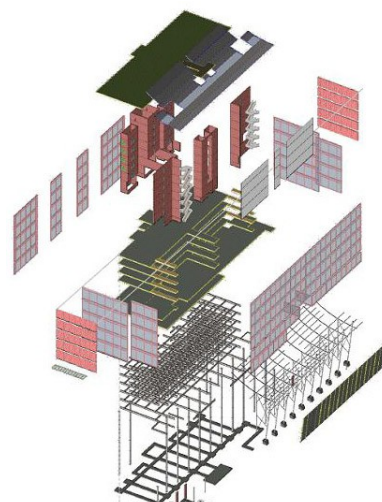
4. Use the Quick Options palette to quickly cycle through the Layer Combinations in order to display each element group individually in the 3D Window.

5. Create Saved Views of the individual element groups (columns, beams, walls, etc.) and name the views to correspond with the names of the Layers and Layer Combinations.

Assemble Views in Layout Window as a Collage. In the Layout View, set up a large format sheet such as 24x36 (600x900). This will allow for enough space for the initial placement and arranging of the Views.

In the Drawing dialog box, check Transparent Background to change the drawing settings to make all inserted drawings have transparent backgrounds. As drawings are layered upon each other, this setting will allow views lowest in the stacking order to remain visible.

In the same dialog box on the Title tab, select No Title from the pull down menu. This will change the default setting that appends title markers to all newly inserted drawings. The finished exploded view.



ArchiCAD training

Book NOW for amazing rates!!

September courses include **Essentials/Advanced ArchiCAD** and **Artlantis**. Book two people or more on a Nottingham training course and receive a free copy of EcoDesigner worth £199 + VAT. Please call for more details and **fantastic offers**.

ArchiCAD Summer School 2009

This month we take a preview look at some of the topics that will be covered at the ArchiCAD Summer School (ACSS) which runs from late afternoon, Thursday September 9th through to early evening Saturday September 11th. The format is really flexible and you can choose to attend the whole programme or just selected days. In addition to the main programme there are also 1 day training sessions on Tuesday 7th and Wednesday 8th which cover getting started with ArchiCAD, intermediate use of ArchiCAD, and getting started through to advanced use of Artlantis. The themes of ACCS are "Collaboration" and "Sustainable Design" with presentations from guest speakers in the evenings: Thursday - Roddy Langmuir, partner of Ted Cullinan (Edward Cullinan Architects), RIBA Gold medallist 2008; and Friday - Pat Borer, (of Pat Borer Architect), author and co-designer of the WISE centre at Machynlleth.

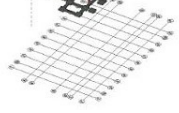
Places are now limited, so if you are interested please [click here](#)

Please note: Due to our involvement in ArchiCAD Summer School, Bite will be running limited support on the Friday 11th September.

Bim Live Events & ArchiCAD 13

Due to the success of the BIM Live events in June, we will be running similar events in October, aimed at non ArchiCAD users who would like to gain an insight into BIM. So if you know anyone who may be interested please email us their details or tell them to register when the details are published. In conjunction with these events we will be holding training sessions covering specific aspects of **ArchiCAD 13**, to help users improve their productivity and enjoyment of ArchiCAD.

These training seminars are being offered at a special rate for UAS Members. We will be sending you further details of the content and timings shortly, dates are now on the Bite website, but if you are interested you can register your details by contacting Chloe on 0115 8404080 or email @ cbrooks@bite.co.uk. Places will be limited.



Bite Design Ltd

Working Smarter

Sales: 0800 952 9530

bite.co.uk